

Period Overview Although Benin Kingdom began to develop during the period 900-1300 CE, it reached its height during the later years of 1300-1700 CE. Currently found in the nation of Nigeria (not the modern-day country of Benin), the kingdom was centred on the City of Benin, and dates back to some of the earliest Ogiso Kings some 2000 years ago. The various villages and tribes of the region began to form a single kingdom that worked as a community, including trading with those from other areas. In the later period up to the 18th Century the kingdom traded with countries in Europe, including a part in the slave trade. The kingdom was eventually destroyed in the Victorian period and led to it later becoming under British rule in West Africa.

Benin

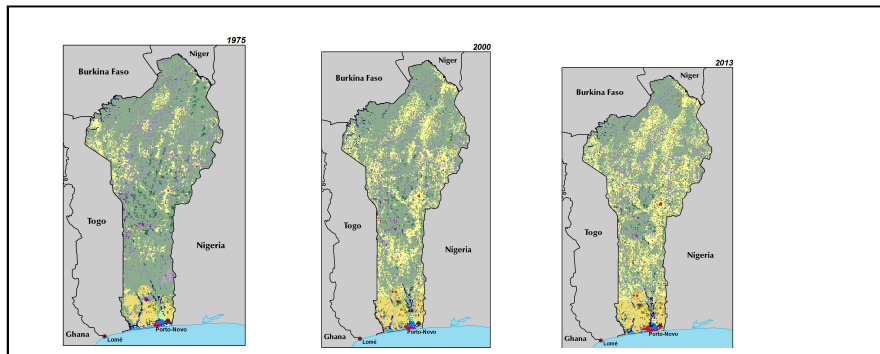
What did the Benin Kingdom ever do for us?

- Sophisticated artwork discovery, including metal work and ivory carvings
- Taught us about culture
- Museum pieces – bronze plaques

Changing Times

- Group of small villages situated in the rainforests of West Africa.
- Around 900 CE, the rule of a dynasty of kings called the Ogisos.
- Earthen moat around the kingdom boundaries
- Farmers and craftsmen
- After 1180 CE, a new line of kings called the Obas began to rule.
- Benin Kingdom began to expand and flourish.
- Established a mighty army and gained control of large areas of land.
- Set up links with Europe to trade goods and slaves.
- Civil wars and the abolition of the trade slave
- Series of disputes with Britain - British

Life in Benin



Key Individuals

- ☐ **Ogiso Igodo** – The first king (or 'Ogiso') of Benin, under whom the smaller villages joined together to form a Kingdom.
- ☐ **Ogiso Owodo** – the last of the Ogiso kings, banished from the Kingdom with his family for bad conduct around 1130/
- ☐ **Oba Eweke** – the first of a new dynasty of kings called the Obas, crowned around 1180 CE.
- ☐ **Oba Oguole** - had the Benin City Wall built around 1283 CE.
- ☐ **Oba Ewuare** – expanded the kingdom greatly and set up trading links with Portugal in 1514 CE.
- ☐ **Oba Ovonramwen** – the last king of Benin, exiled by British troops after their invasion in 1897 CE.

Date	Information
AD 400	The Yoruba people start using iron tools to enable them to clear forests, land effectively.
AD 900	Benin Kingdom is first established when small villages join together in a conglomerate.
AD 900-1400	An enormous earthen moat is built around the Kingdom boundaries.
AD 1180	The first dynasty of Ogiso kings ends and the Obas began their rule.
AD 1440	Benin begins to expand and thrive under the rule of Oba Ewuare the Great.
AD 1514	Oba Esigie sets up trading links with Portuguese and other European visitors.
AD 1700	Benin Kingdom enters a period of decline due to a series of civil wars and the abolition of the slave trade with Europe.
AD 1897	Benin City is destroyed by British troops and Benin comes under Britain's control.

Vocabulary

Animism	
Archaeologists	
British Empire	
Bronzes	
Colonisation	
Earthen Moat	
Historians	
Ife	
Igodomigodo	The first unified kingdom
Nigeria	
Oba	
Ogisos	
Portuguese	
Primitive	
Repatriation	
Yoruba	

Broader Context

- ☐ Anglo-Saxon kingdoms in Britain (410-1066 CE)
- ☐ Vikings invade Britain (793-1066 CE)
- ☐ Baghdad becomes the World's largest city, (800 CE)
- ☐ Ghana Empire is established (830 CE)
- ☐ Battle of Hastings in Britain (1066 CE)
- ☐ Baghdad destroyed by the Monguls (1258 CE)
- ☐ Columbus arrives in America (1492 CE)
- ☐ British Tudor Period (1485-1600 CE)
- ☐ Abolition of the Slave Trade (1807 CE)